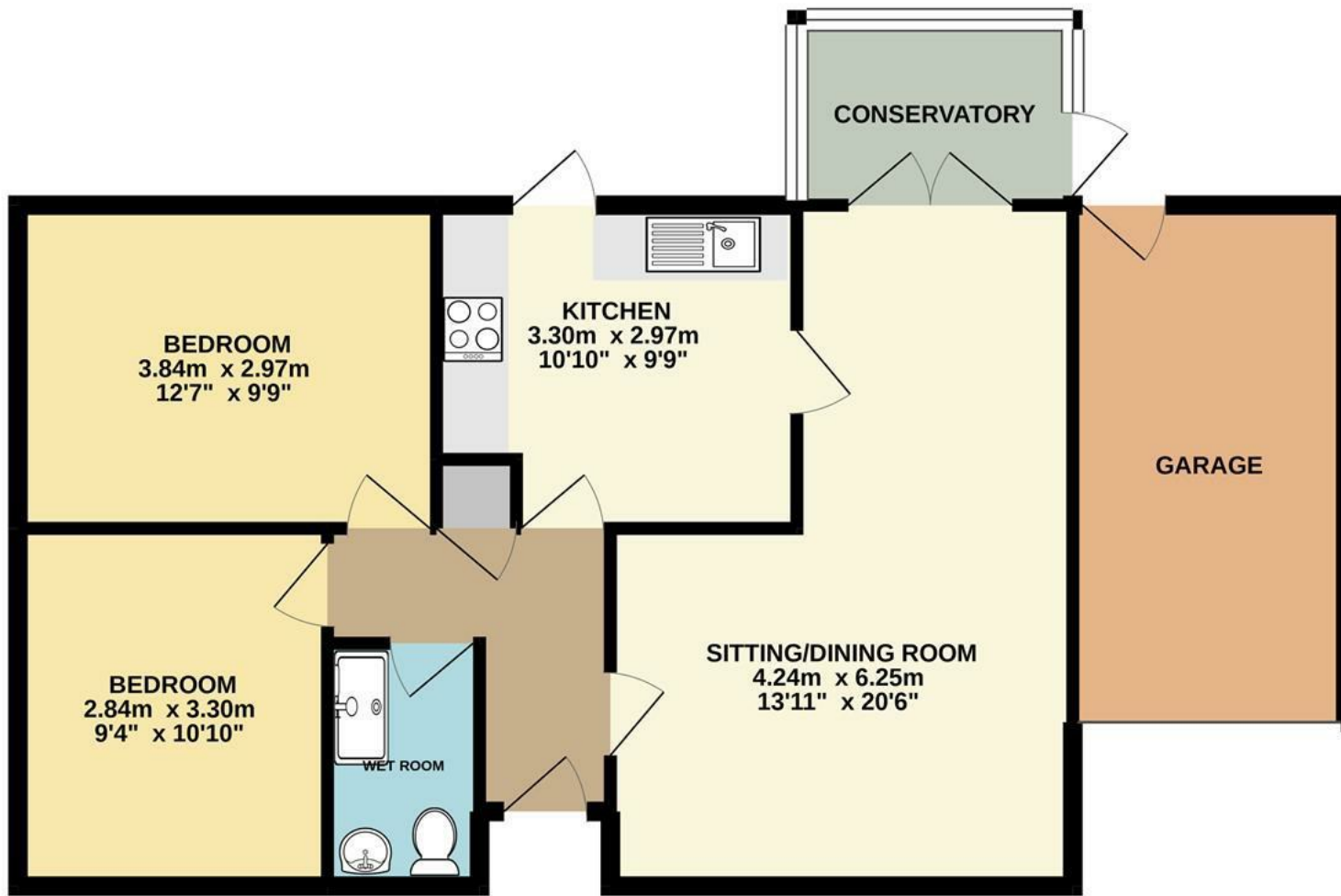


GROUND FLOOR
75.8 sq.m. (816 sq.ft.) approx.



Energy Efficiency Rating		Current	Potential
Very energy efficient - lower running costs			
(92 plus)	A		
(81-91)	B		
(69-80)	C		
(55-68)	D		
(39-54)	E		
(21-38)	F		
(1-20)	G		
Not energy efficient - higher running costs			
England & Wales		EU Directive 2002/91/EC	

Disclaimer – In accordance with the Property Misdescriptions Act, the company gives notice that all descriptions, references to condition, necessary permissions for use and other details are given in good faith and believed to be correct, but any intending lessees do not rely on them as statements of fact, but must satisfy themselves by inspection or other means, as to their accuracy.

TOTAL FLOOR AREA: 75.8 sq.m. (816 sq.ft.) approx.

Whilst every attempt has been made to ensure the accuracy of the floorplan contained here, measurements of doors, windows, rooms and any other items are approximate and no responsibility is taken for any error, omission or mis-statement. This plan is for illustrative purposes only and should be used as such by any prospective purchaser. The services, systems and appliances shown have not been tested and no guarantee as to their operability or efficiency can be given.
Made with Metropix ©2021



Springfields | Attleborough | NR17
£240,000



abbotFox presents this two bedroom, detached bungalow. Occupying a generous plot, within a quiet residential close, this home is the perfect opportunity for any buyer looking to enjoy life on one level. With Attleborough town centre within walking distance, this is an ideal home for those looking for convenience. With accommodation comprising of an inviting entrance hall, spacious lounge diner, kitchen and conservatory to complement the two double bedrooms and wet room, the space on offer belies the external appearance. The property also benefits from front and rear gardens, with ample off road parking and an adjoining garage. An internal viewing comes highly recommended.

Guide price £240,000 - £250,000

